

*Regal Imports Ltd.*

DIAMOND BROKER

October 22, 2000

Commissioner of Competition  
Competition Bureau  
Place du Portage 1  
50 Victoria Street  
Hull, Quebec  
K1A 0C9

Attention: Pierre Riopel

RE: Addendum to response

Dear Mr. Riopel

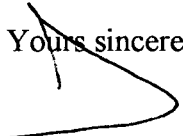
The reference by Sirius Diamonds in his letter to the Competition Bureau about the price list of Regal Imports neglects the title page of the price list which explains how to read the text. In the column labeled description, it clearly states, "Cut, or Country of Origin, or Specific Feature." As Mr. Ben Oliel states in his letter ... "the whole industry knows" ... that Belgium and Thai refer to cut, Russian refers to country of origin and cut. It is not a secret that the term Canada not "Canadian" used by Regal Imports refers to mined in Canada only.

Two points of Clarification:

1) Country of origin cannot be determined when diamond rough is purchased through the DeBeers syndicate or most other sources, (excluding B.H.P.). Some diamond dealers choose to inform their clients of the country where the diamond is cut in order to disclose as much information about the diamond as possible. This information in no way conflicts with country of origin

2) Cutters of the north do not have an exclusive on integrity. Some northern cutters are also importers or deal with polished diamonds other than from Canadian sources. They also bring their Canadian rough into Canada from the B.H.P. distribution centre in Belgium. If a northern cutter wished to brand a non Canadian diamond or a diamond cut in another country with his Canadian logo, he would have the opportunity.

Yours sincerely,

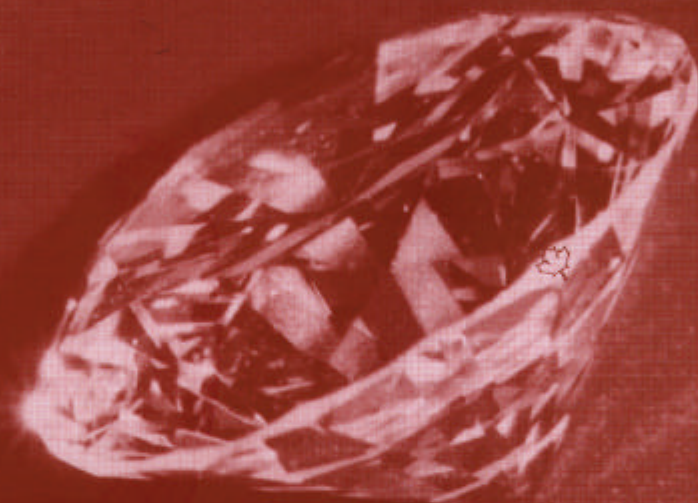
  
Mel Moss  
Regal Imports Ltd.

# REGAL IMPORTS LTD.

630 - 650 W, 41st. Avenue  
Vancouver, B.C. V5Z 2M9

Tel: (604) 263-2621  
Fax: (604) 263-4008  
Toll Free: 1-800-863-2621

Summer / Fall 2000 **PRICE LIST**



Weight

05

The Average  
Weight of  
Diamonds in  
Parcel

Description

E VS2 Russian

Colour  
Rating

Clarity  
Rating

Cut,  
or Country of Origin,  
or Special Feature

Quantity  
Available

10.27

Weight  
of  
Entire  
Parcel

## KEY FOR PRICE LIST

- "RUSSIAN" denotes country of origin and indicates superior cut
- "H.R.D." denotes certified sealed diamond with certificate
- "H.R.D.P." denotes preliminary certificate, unsealed diamond
- "Collection" = D,E,F, colour

*Since our Stock is continually turning over, please phone to confirm availability.*



our inventory list is upgraded weekly on our website

[www.regalimportsltd.com](http://www.regalimportsltd.com)

WEIGHT	DESCRIPTION	QUANTITY AVAILABLE	PRICE per CARAT *
005	G-H VS2-SI1 THAI	1.62	
01	LB SI2-3 REPAIRS	3.49	
015	E-F VVS THAI	0.19	
015	E-F VS2-SI1 THAI	0.16	
015	E-F VS THAI	0.70	
015	F-G SI1 RUSSIAN	0.45	
02	COLLECTION VVS RUSSIAN	0.76	
02	E-F VVS THAI	2.98	
02	G-H VS2-SI1 THAI	2.00	
02	G-H VS THAI	0.55	
02	G-H VS THAI	0.72	
02	G-H VVS THAI	7.73	
02	E-F VS2-SI1 THAI	0.87	
02	E-F VS THAI	1.07	
025	G-H SI1 THAI	3.05	
025	E-F VVS THAI	0.10	
025	E-F VVS THAI	0.03	
025	E-F VS THAI	1.87	
025	G-H SI2-3 THAI	0.78	
025	COLLECTION SI2-3 THAI	0.46	
025	G-H VS THAI	1.41	
025	E-F SI1 THAI	1.88	
025	F-G SI+ RUSSIAN	0.23	
025	SERIES 7 I1 RUSSIAN	0.43	
03	COLLECTION VVS RUSSIAN	0.12	
03	E-F VVS THAI	0.06	
03	G-H SI1 THAI	1.55	
03	COLLECTION VVS THAI	0.09	
03	E-F VS THAI	4.36	
03	COLLECTION VVS THAI	2.04	
03	G-H VS THAI	0.59	
03	E-F SI1 THAI	3.25	
04	E-F VVS THAI	0.73	
04	E-G VS THAI	6.06	
04	G-H SI1 THAI	4.38	
04	E-F VS THAI	9.66	
04	G-H VS THAI	5.62	
04	E-F VVS THAI	1.15	
04	G-H SI2-3 THAI	1.47	
04	COLLECTION SI2-3 THAI	1.41	
04	E-F SI1 THAI	3.97	
045	COLLECTION VS2-SI1 RUSSIAN	0.88	
05	E-F VS RUSSIAN	1.58	
05	E-F SI1 THAI	2.94	
05	E-F VVS THAI	3.45	
05	E-F VS THAI	2.25	
05	E-F VS THAI	0.09	
05	G-H VS THAI	5.11	
05	G-H SI1 THAI	4.43	
05	COLLECTION SI2-3 THAI	1.60	
05	F-G SI+	3.15	
05	WHITE I1 RUSSIAN	5.33	
05	WHITE SI RUSSIAN	1.00	
05	SERIES 7 I1 RUSSIAN	1.46	
06	COLLECTION VS2-SI1 RUSSIAN	1.54	

WEIGHT	DESCRIPTION	QUANTITY AVAILABLE	PRICE per CARAT *
06	COLLECTION VVS RUSSIAN	2.13	
06	E-F VS THAI	0.07	
06	F-G SI THAI	0.78	
06	COLLECTION VVS THAI	3.83	
06	E-F VS THAI	7.20	
06	E-F SI1 THAI	5.94	
06	G-H VS THAI	1.58	
06	G-H SI1 THAI	0.52	
06	G-H SI2-3 THAI	2.11	
06	COLLECTION SI2-3 THAI	2.75	
06	F-G SI+	1.67	
07	COLLECTION VS RUSSIAN	0.15	
07	COLLECTION VVS RUSSIAN	0.05	
075	G-H VS1 THAI	0.03	
08	COLLECTION VS2-SI1 RUSSIAN	0.63	
08	COLLECTION VVS RUSSIAN	0.08	
08	D-E 5.0MM COLLECTION	0.33	
08	F-G SI+	1.63	
09	COLL VVS PRINCESS RUSSIAN	0.30	
09	COLLECTION SI+	0.18	
10	COLLECTION VVS RUSSIAN	1.05	
10	E-F VS2-SI1 THAI	3.03	
10	E-F VVS THAI	3.72	
10	E-F VS THAI	0.91	
10	E-F SI1 THAI	0.34	
10	E-F I1-2 THAI	0.44	
10	COLLECTION VVS THAI	3.92	
10	COLLECTION SI1 THAI	7.90	
10	COLLECTION VS THAI	0.82	
10	COLLECTION SI2 THAI	4.26	
10	G-H VVS THAI	1.16	
10	F-G SI1 THAI	4.64	
10	F-G SI2 THAI	3.94	
10	F-G I1 THAI	0.12	
10	G SI2 THAI	0.27	
10	G SI3 THAI	0.29	
10	G-I VVS RUSSIAN	0.53	
10	F-G SI+	1.34	
10	SERIES 7 I1 RUSSIAN	4.01	
11	E-F SI THAI	0.58	
11	G-H VS THAI	1.70	
11	F-G SI2-3 BELGIUM	1.71	
12	COLLECTION VVS RUSSIAN	0.49	
12	COLLECTION VS2-SI1 RUSSIAN	2.97	
12	F-G VS2-SI1 RUSSIAN PRINCESS	0.14	
12	COLLECTION VVS PEAR	0.11	
13	COLLECTION VVS RUSSIAN	0.09	
15	COLLECTION VVS RUSSIAN	0.17	
15	F-G SI THAI	0.14	
15	E-F SI1 THAI	0.13	
15	E-F VVS THAI	2.44	
15	F SI3-I1 THAI	0.27	
15	COLLECTION VS THAI	2.34	
15	E-F SI1 THAI	0.28	
15	E-F VS THAI	6.34	

\* PRICE per CARAT **DOES NOT** Include ExciseTax (10%) or GST (7%)